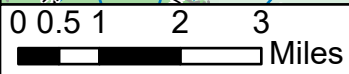


121°41.5'W 121°39.5'W 121°37.5'W 121°35.5'W 121°33.5'W 121°31.5'W 121°29.5'W 121°27.5'W 121°25.5'W 121°23.5'W 121°21.5'W 121°19.5'W

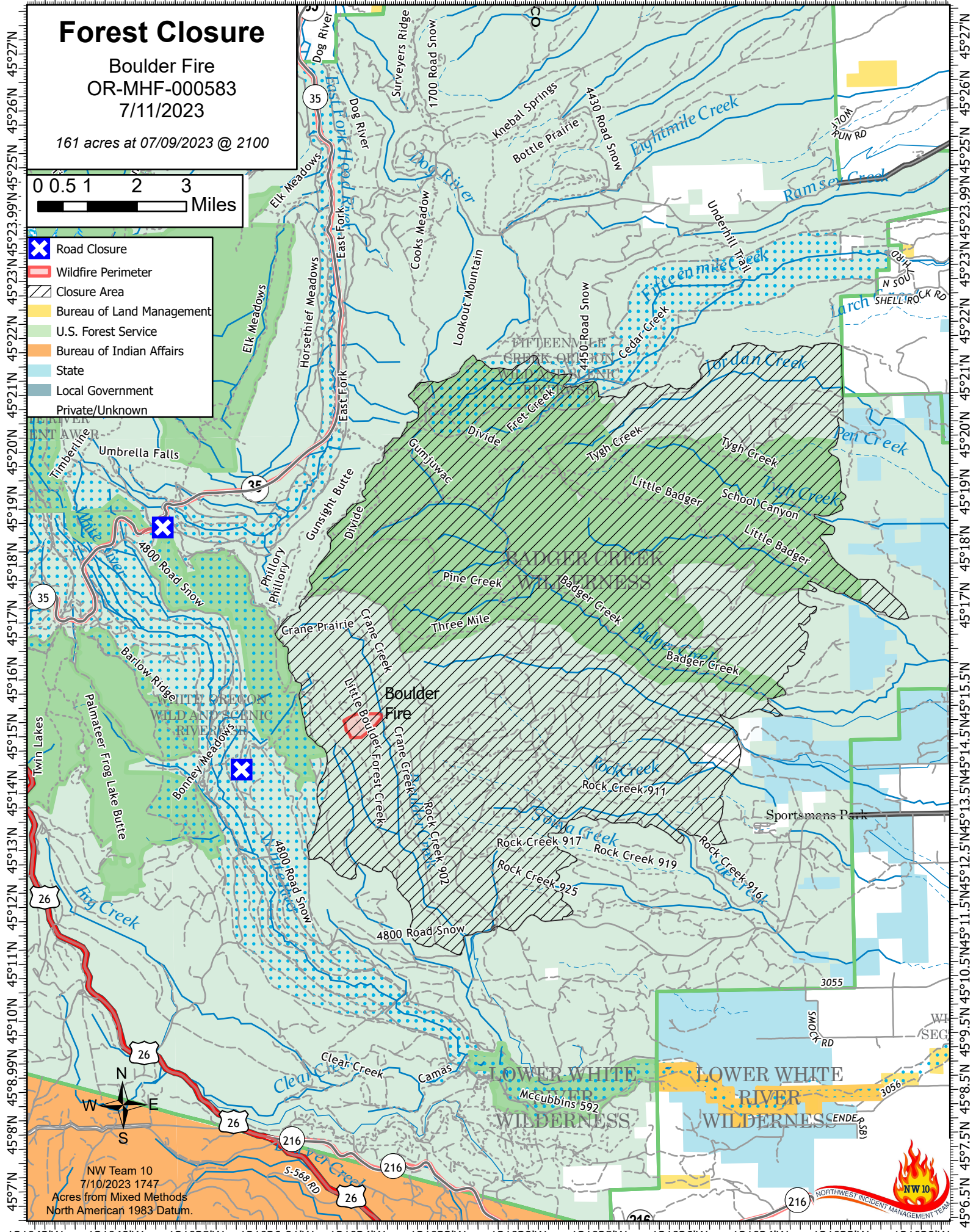
Forest Closure

Boulder Fire
OR-MHF-000583
7/11/2023

161 acres at 07/09/2023 @ 2100



- Road Closure
- Wildfire Perimeter
- Closure Area
- Bureau of Land Management
- U.S. Forest Service
- Bureau of Indian Affairs
- State
- Local Government
- Private/Unknown



NW Team 10
7/10/2023 1747
Acres from Mixed Methods
North American 1983 Datum.



121°42'W 121°40'W 121°38'W 121°36.01'W 121°34'W 121°32'W 121°30'W 121°28'W 121°26'W 121°24'W 121°22'W 121°20'W

45°27'N 45°26'N 45°25'N 45°23.99'N 45°23'N 45°22'N 45°21'N 45°20'N 45°19'N 45°18'N 45°17'N 45°16'N 45°15'N 45°14'N 45°13'N 45°12'N 45°11'N 45°10'N 45°9.99'N 45°9'N 45°8.5'N 45°8'N 45°7'N

45°27'N 45°26'N 45°25'N 45°23.99'N 45°23'N 45°22'N 45°21'N 45°20'N 45°19'N 45°18'N 45°17'N 45°16'N 45°15'N 45°14'N 45°13.5'N 45°12.5'N 45°11.5'N 45°10.5'N 45°9.5'N 45°8.5'N 45°7.5'N 45°6.5'N